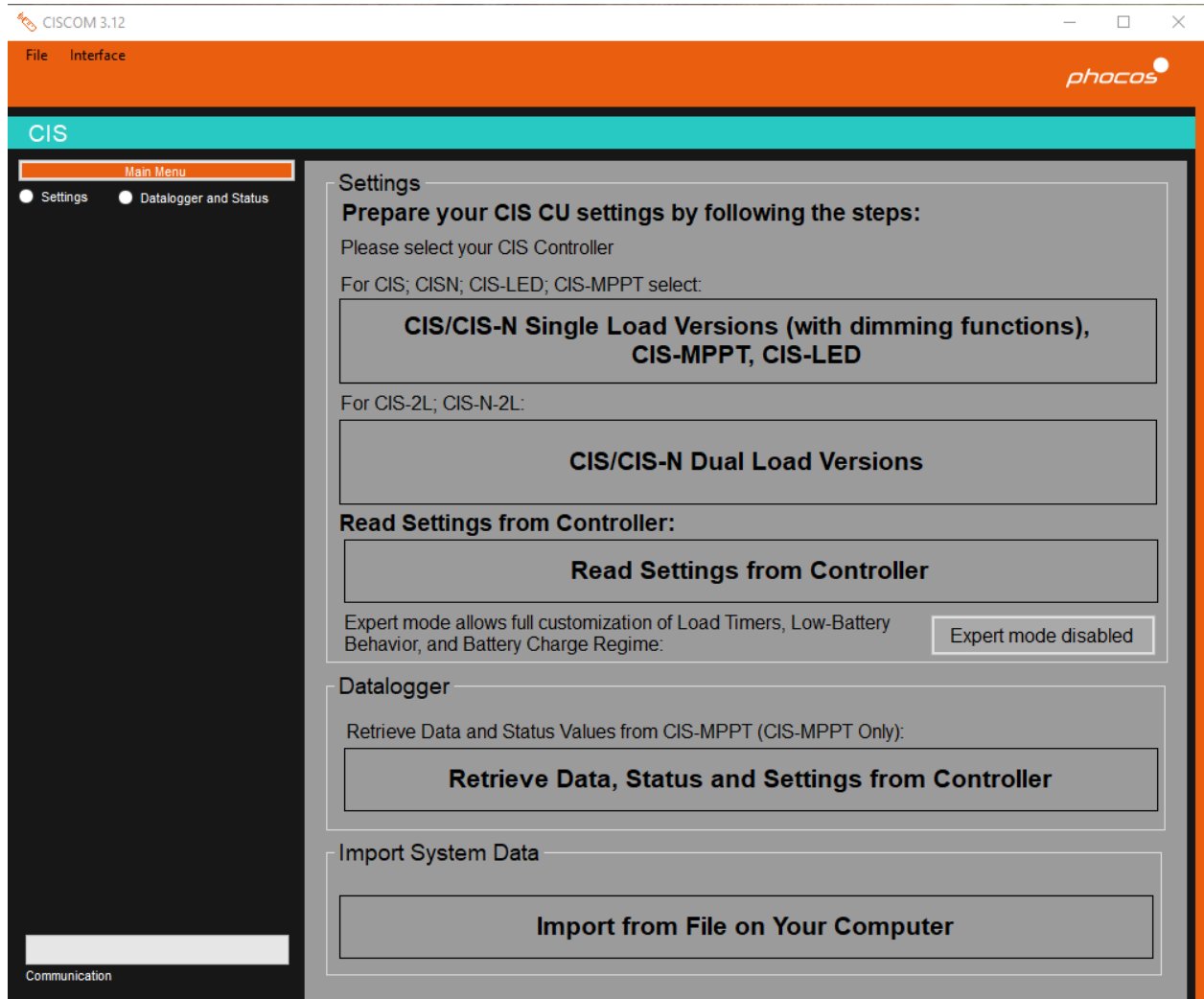


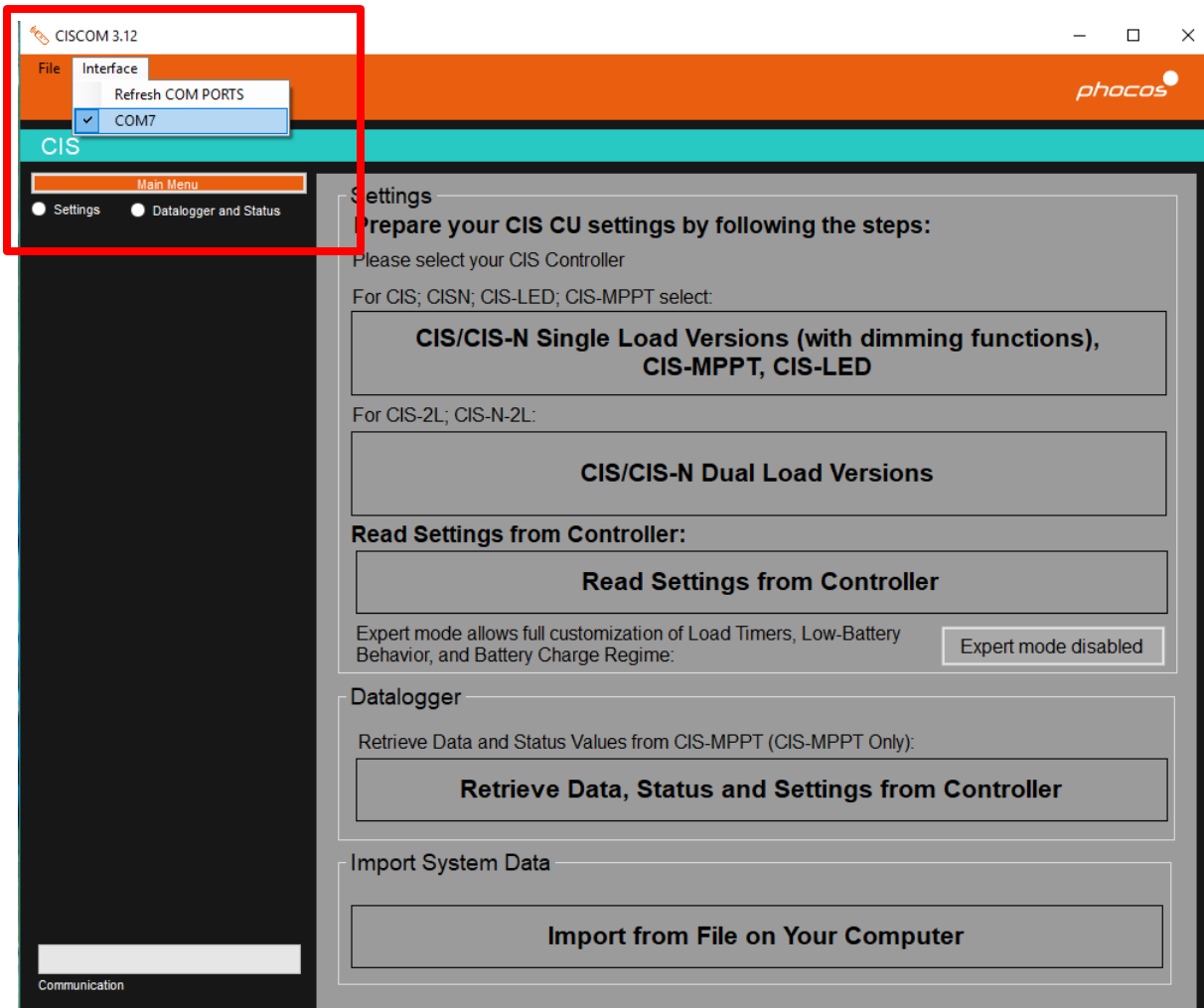
# Using CISCOM to Read and Save CIS-MPPT Data

## I.O Reading and Viewing Data

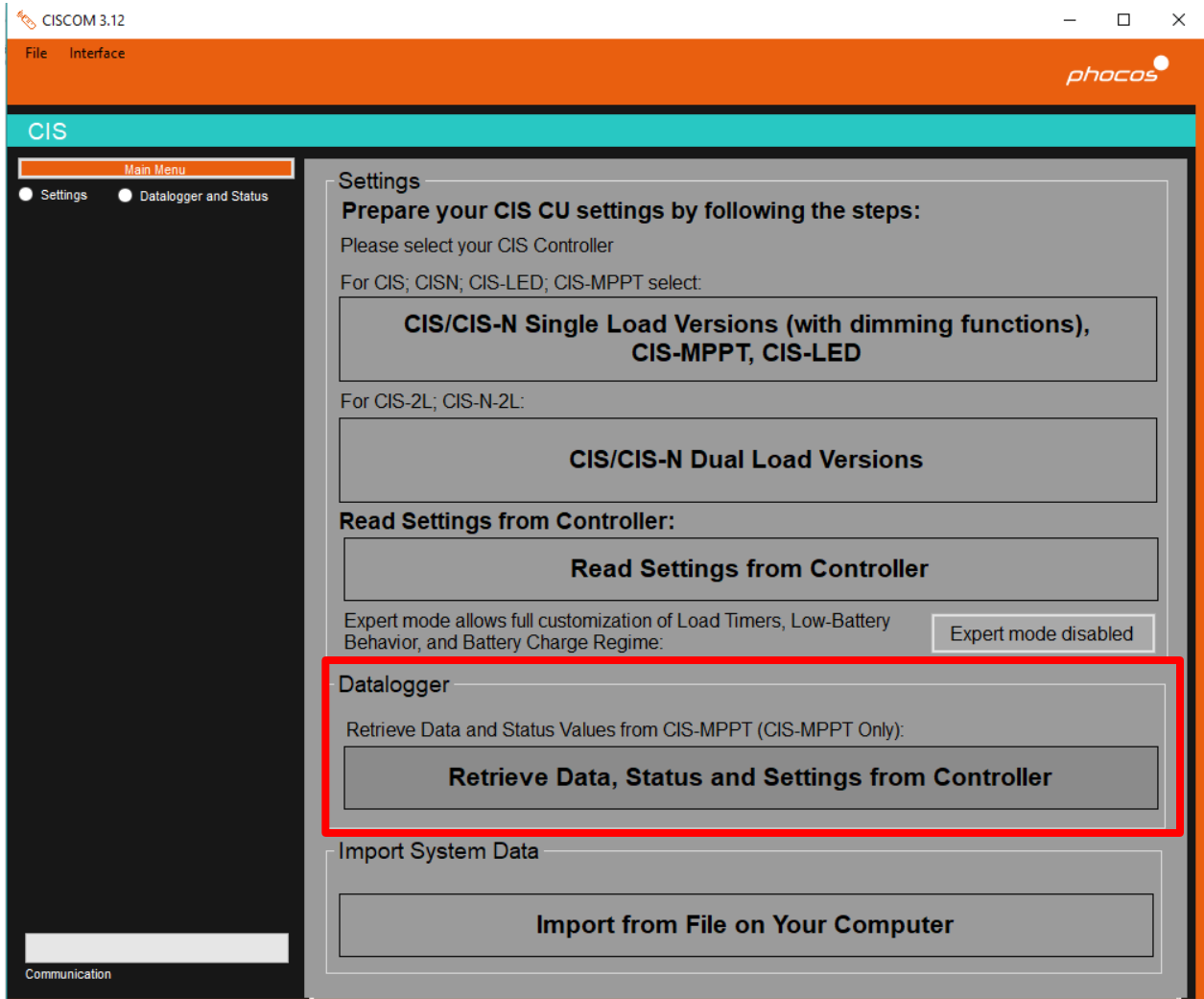
- 1) Power on the CIS-MPPT.
- 2) Connect MXI-HR to computer with CISCOM.
- 3) Open CISCOM.



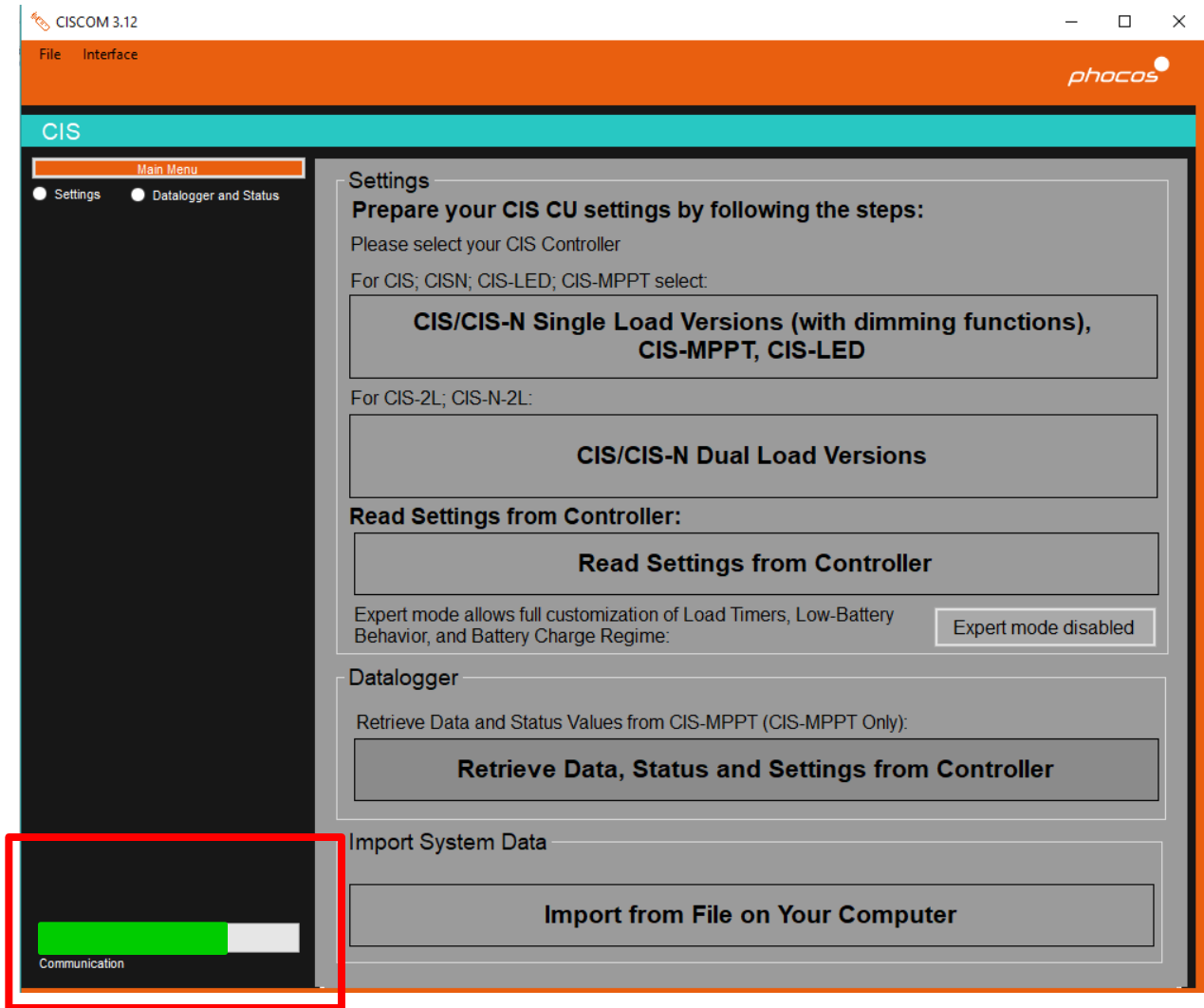
- 4) From the main screen, select “Interface” in the upper left area of the window. A drop down menu will appear. Select the COM port used by your MXI-IR. (Use scroll bar if “File” and “Interface” do not appear initially.)



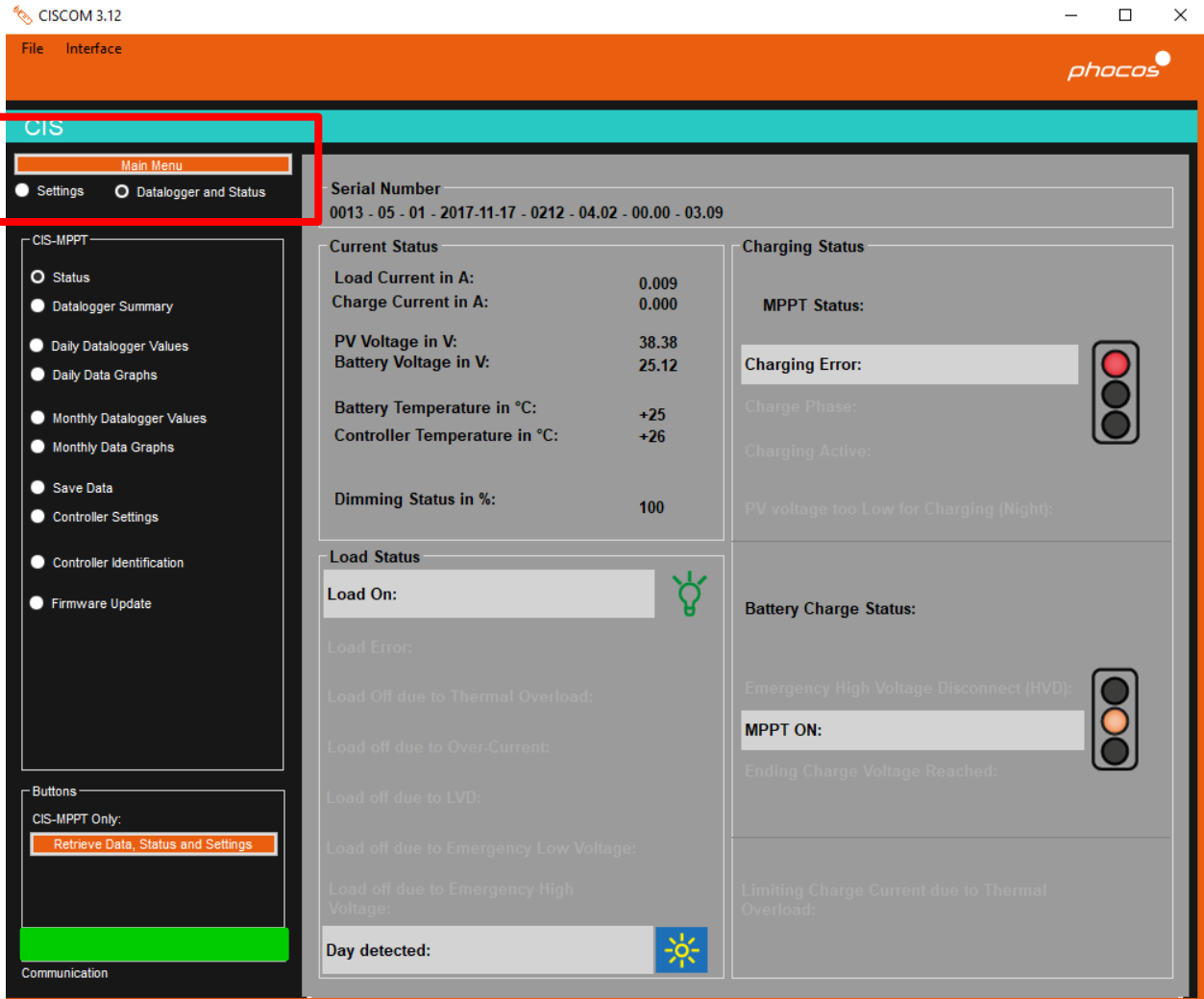
- 5) Ensure the MXI-IR and CIS-MPPT have a clear line of sight between IR transceivers that is less than 8m.
- 6) From the main screen, select “Read data, status and settings from controller” button in the lower right area of the window.



- 7) Communication should begin and may take a couple minutes to complete. This is indicated by a full green communication status bar in the lower left area of the window. (Use scroll bar if communication status bar is not visible.)



- 8) Select "Datalogger and status" radio button from the Main Menu on the left side of the window if not done automatically.



- 9) Select desired view from the Main Menu such as "Status," "Daily Datalogger Values" or "Monthly Datalogger Values."

File Interface phocos

CIS

Main Menu

- Settings
- Datalogger and Status

---

CIS-MPPT

- Status
- Datalogger Summary
- Daily Datalogger Values
  - Daily Data Graphs
  - Monthly Datalogger Values
  - Monthly Data Graphs
- Save Data
- Controller Settings
- Controller Identification
- Firmware Update

---

Buttons

CIS-MPPT Only:

Retrieve Data, Status and Settings

	Day 1	Day 2	Day 3	Day 4	Day 5	Day 6	Day 7	Day 8	Day 9	Day 10
Max. Battery Voltage (V):	19.10	19.10	19.10	19.10	19.10	13.20	24.00	23.70	23.30	23.00
Min. Battery Voltage (V):	18.90	18.80	17.60	17.60	17.50	11.40	23.60	23.20	22.90	22.30
Charge Amp Hours (Ah):	0.13	0.54	1.60	1.64	1.63	28.34	0.00	0.00	0.00	0.00
Load Amp Hours (Ah):	0.00	0.00	0.02	0.01	0.01	0.00	0.00	0.00	0.00	0.00
Max. Load Current (A):	1.50	1.50	0.00	0.00	0.00	1.50	0.00	0.00	0.00	0.00
Max. PV Current (A):	0.00	0.50	1.00	1.00	1.00	28.00	0.00	0.00	0.00	0.00
Max. PV Voltage (V):	44.00	44.00	46.50	46.00	46.00	42.50	45.00	45.50	45.50	46.00
Min. PV Voltage (V):	0.50	0.50	0.50	0.50	0.50	0.50	2.50	2.50	2.50	2.50
Batt. State Of Charge (SOC%):	00	00	00	00	00	00	00	00	00	00
Max. Battery Temperature (°C):	+19	+21	+22	+22	+21	+28	+25	+25	+27	+26
Min. Battery Temperature (°C):	+18	+18	+13	+14	+15	+17	+19	+19	+19	+19
Length of Night (h):	12.0	12.0	11.8	11.8	11.8	12.0	11.5	11.5	11.5	11.5

Fully Charged Battery:										
Low Voltage Disconnect:										
PV Over-Current Disconnect:										
Load Over-Current Disconnect:										
Batt. Emergency High Voltage:										
Thermal Overload (PV Off):										
Thermal Overload (Load Off):										
Thermal Overload (PV Limit):										

## 2.0 Saving Data

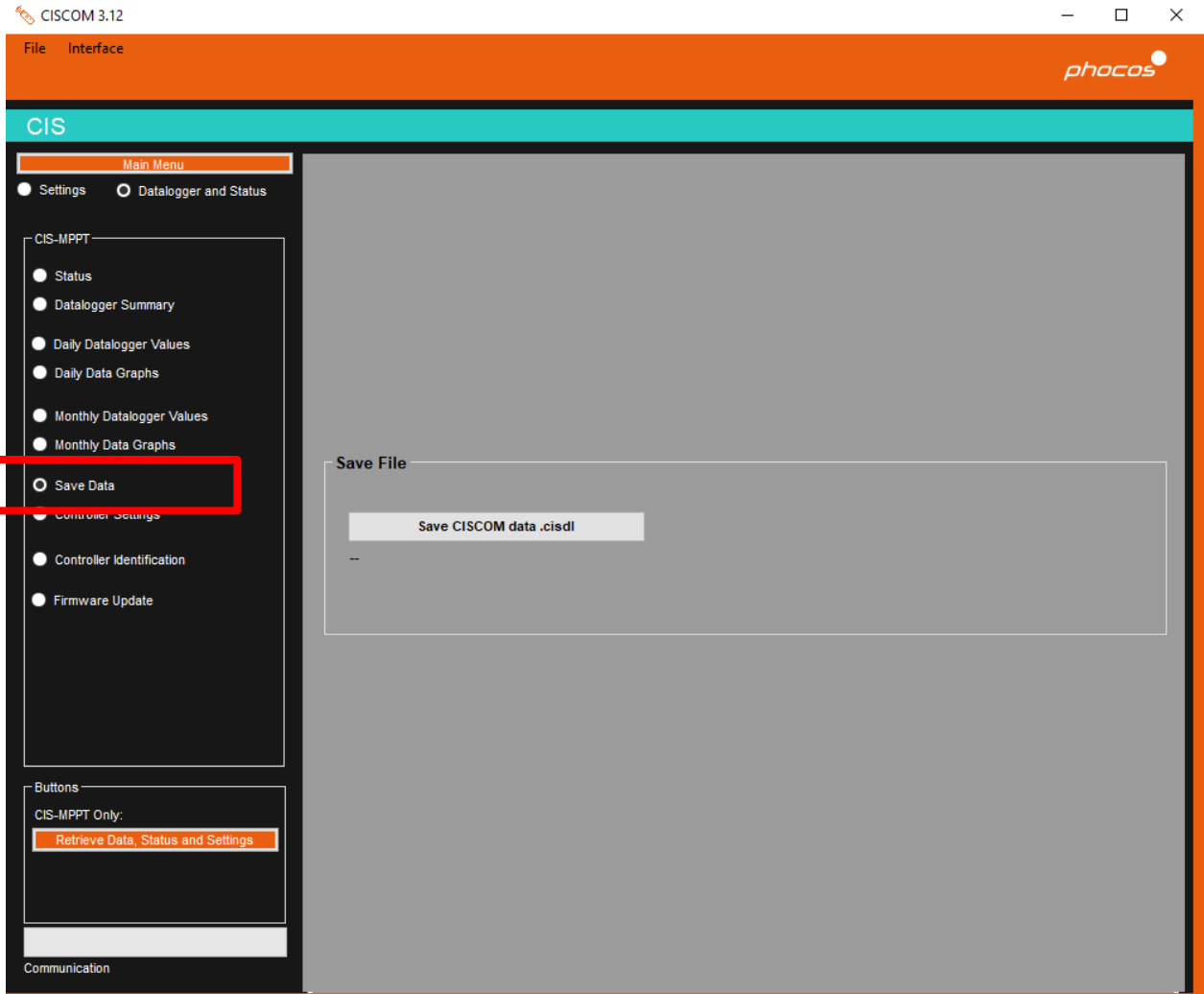
After data has been read from the controller, it can be saved as a .cisdl file. Then it can be shared and viewed by other people who have CISCOM.

- 1) Select "Save Data" radio button from the Main Menu. The Save File sub-window will appear on the right side of the window.

24 Oct 2018

www.phocos.com

6 | Page



- 2) Select "Save CISCOM data .cisdl" button.
  
- 3) The Windows File Explorer will appear. Navigate to the desired location, and change the file name as desired.